

Application:

Adobe InDesign, Adobe Acrobat

Platform:MACINTOSH, PC

General:

- It doesn't matter any more if the PDF has been created via Print to Postscript and Acrobat Distiller or via PDF Export
- No security restrictions must be applied
- No trapping whatsoever should be applied during file creation. Since you are submitting composite files the printers RIP will take care of it during separation
- No special overprint settings must be applied. Note that white text must not be set to overprint and that black text overprints except some special effects. Do not apply overprint to coloured elements except you're 100% sure what you're doing because it might lead to unwanted results. We'll do special checks on cover pages to prevent unwanted results but it's impossible to extend these checks to all inner pages. Therefore you're responsible for overprinting of coloured elements on the inner pages! If you're unsure Acrobat Professional 7/8 separation and overprint preview function can assist you.

Specifications for print ready PDFs:

- Ensure that you have used the correct templates and dimensions such as a minimum of 3 mm bleed. All components must be single pages, the only exception is the manual cover as printers pairs
- All parts require trim, bleed and registration marks (no marks in the bleed area!)



- All pictures and logos must be saved at a minimum of 450 dpi (600 dpi recommended) in CMYK format, no specials colours (Pantone) must be present unless you deliberately want them in your product. If you use Acrobat 6 or higher check the separations with "Separation Preview" ("Advanced" menu)

Color Management settings:

before creating PDFs you have to set up your applications colour management correctly. First you have to import the newest profiles for ISO 12647-2 recommended by FOGRA (www.fogra.de, www.eci.org).

Profiles for ISO 12647-2:2007:

RGB: eciRGB_v2.icc

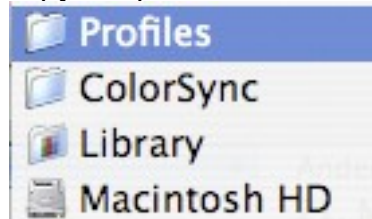
CYMK: ISOcoated_v2_ECI.icc

to be found in folder "Support Files\Colour Calibration\Profiles"

Copy this two profiles into the appropriate folder shown below for Mac or PC

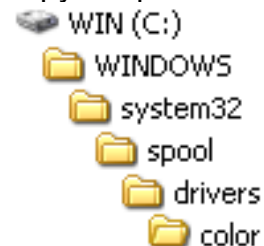
Mac:

copy the profiles to "Macintosh HD:Library:ColorSync:Profiles"



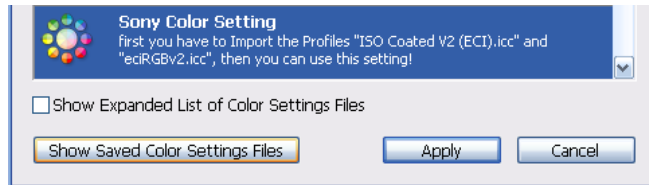
PC:

copy the profiles to "C:\Windows\System32\spool\drivers\color"



There are several ways how to set up these profiles in your Adobe graphic programs. It's important that every Adobe graphic program uses the same profiles!

- 1.) use the software Adobe Bridge (comes with Creative Suite or Design Suite) to sync the settings over the whole Suite
 - 1.) choose "Edit" -> "Creative Suite Color Settings ..."
 - 2.) press the button "Show Saved Color Settings Files" -> a folder new folder will appear
 - 3.) copy our preset "Sony Color Setting.csf" ("Support Files\Colour Calibration") into this folder
 - 4.) choose the profile "Sony Color Settings" in "Suites Color Settings"

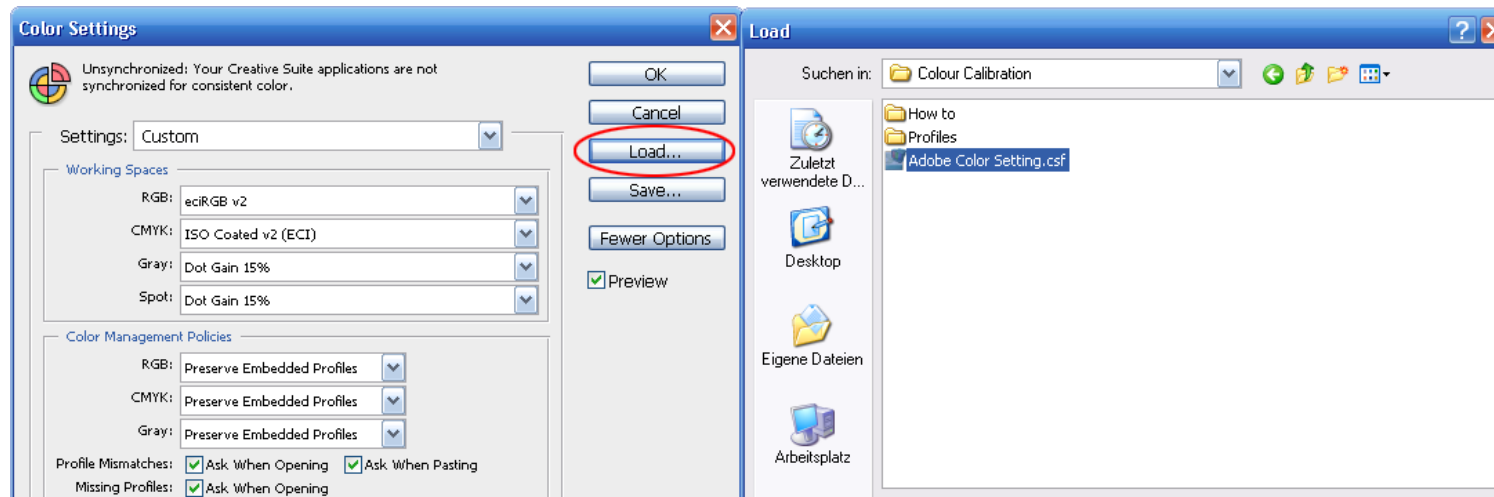


- 5.) if there's no error you now have same colour settings through all your Adobe programs

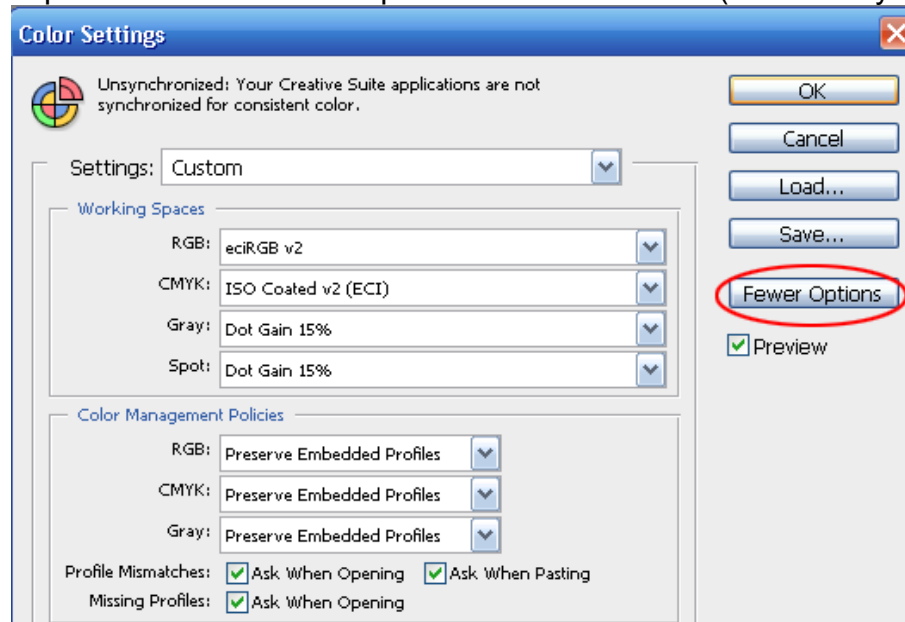
- 2.) load our preset into each program

our preset "Sony Color Setting.csf" is located in folder "Support Files\Colour Calibration"

Open every program and go to the color settings (Edit -> Color Settings (PH, ILL, IND) – not supported in Adobe Acrobat Professional -> see 3.) -> manually choose profiles). In color settings press the button "Load ..." to load our preset.

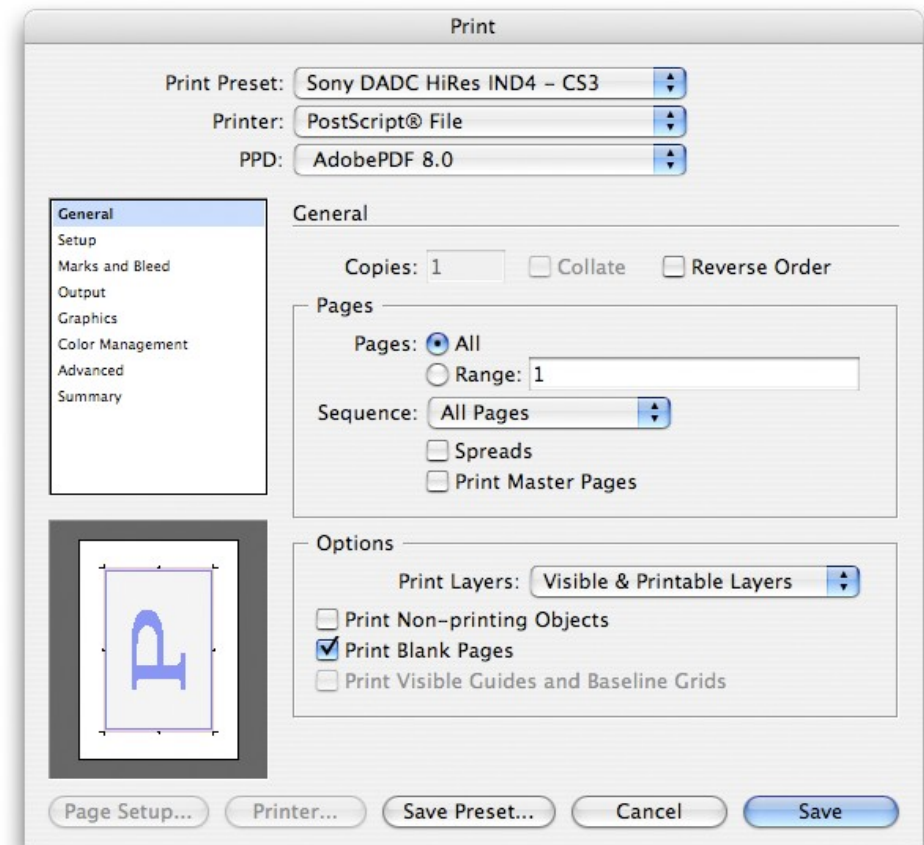
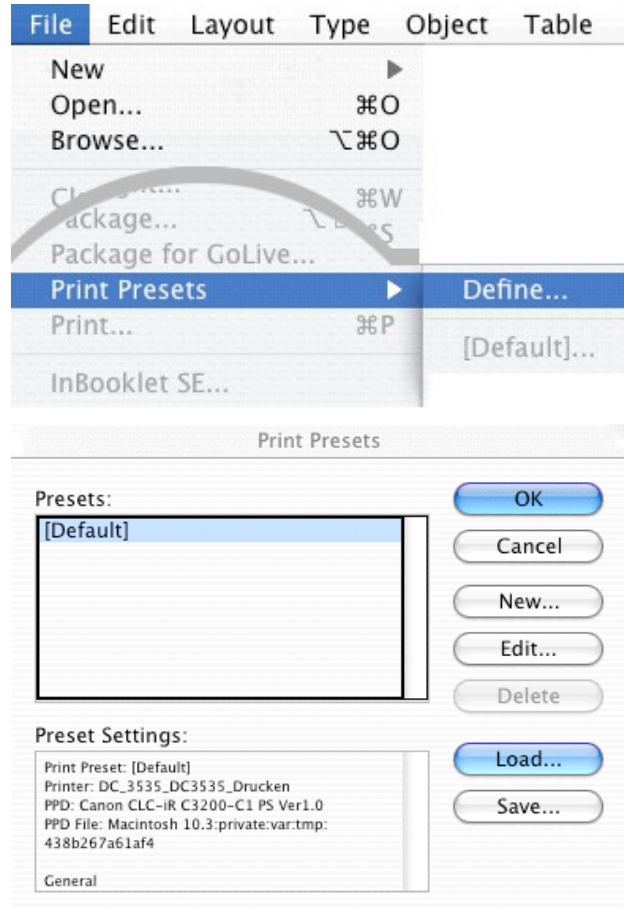


- 3.) manually choose the icc profiles
open colour management settings for each program (Edit -> "Color Settings" (PH, ILL, IND) or Preferences -> "Color Management" in Adobe Acrobat Professional) and manually choose the profiles (like shown in screenshot below).
Important: Button "More Options" has be selected (otherwise you won't find the profiles in the list)

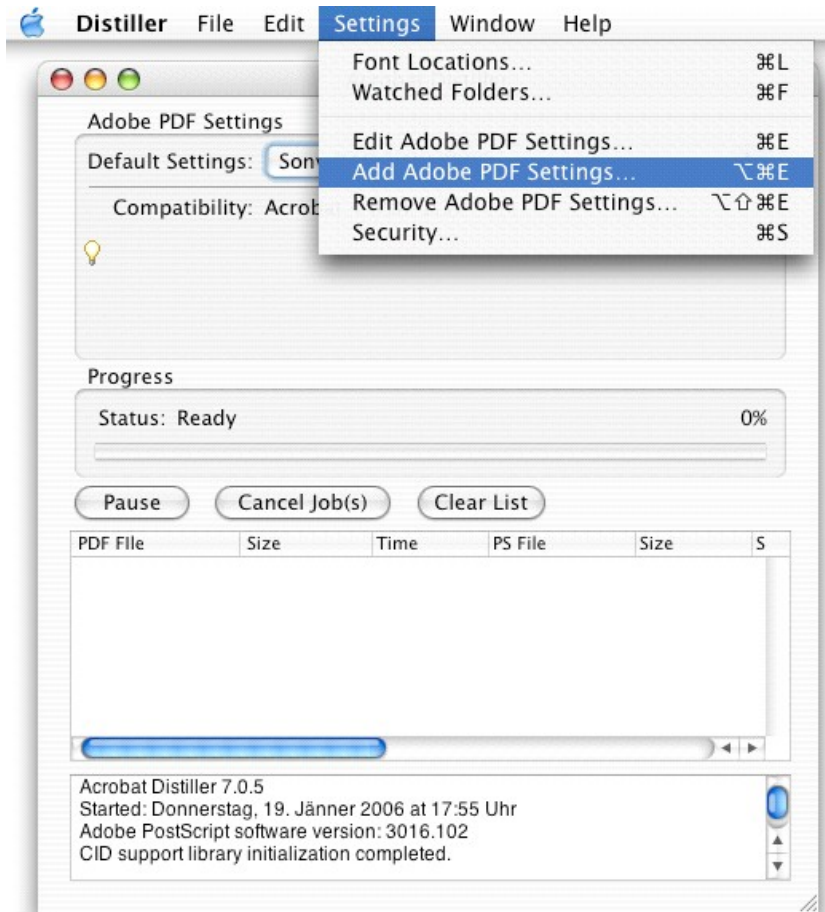


Creating a PDF via Postscript and Acrobat Distiller:

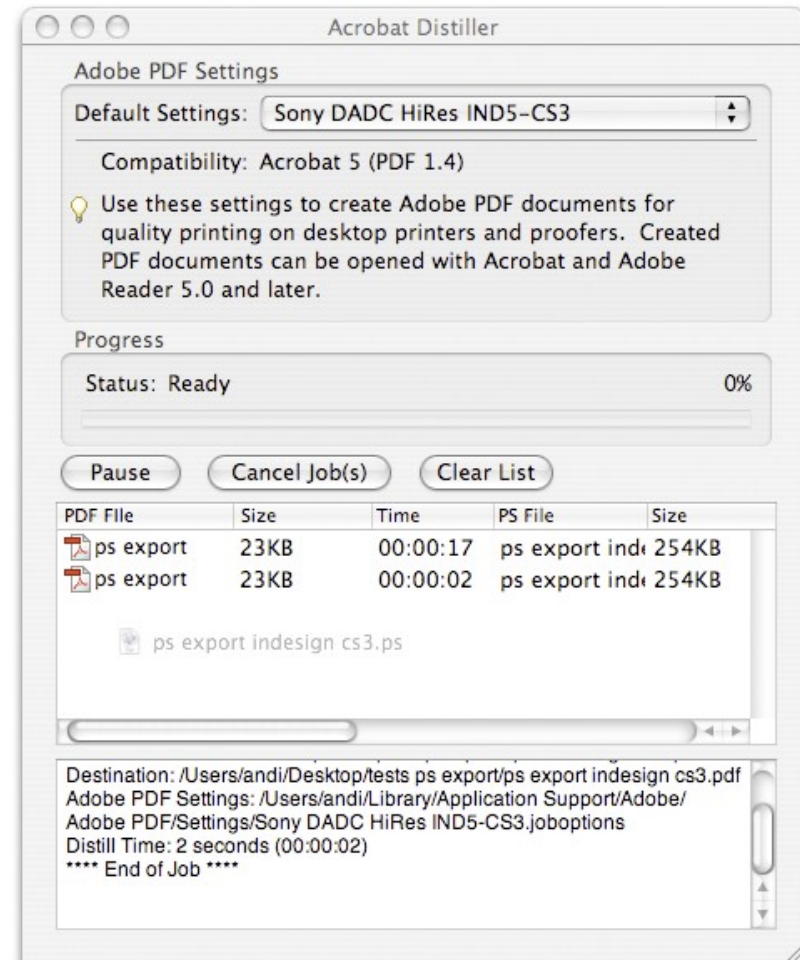
- 1.) open folder "Settings Adobe InDesign/PDF via PostScript/" and choose between folder "Mac" or "PC". Now follow the instructions in file "Readme first.txt".
- 2.) Load the appropriate presets (.prst) for your version of InDesign from the folder "PDF via PostScript" (choose from PC or Mac).
- 3.) use generic PPD if InDesign cannot locate the PPD specified in our preset. Then edit the preset and choose "Adobe PDF" or "Adobe PDF 7.0/8.0" and enter new values section "Setup".
- 4.) Open your document, press "Apple/ Strg. P", and choose the Sony DADC setting from "Print Preset". After adopting them for your specific product (e.g. page size) press the Button "OK" and output as postscript file.



5.) Import the Sony DADC HiRes Setting into Acrobat Distiller to be found under “Support Files/Acrobat Distiller Settings” and use them for every PDF you’d like to send to Sony DADC

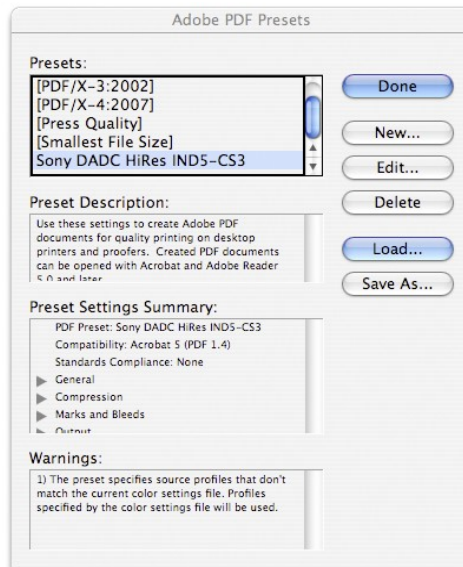
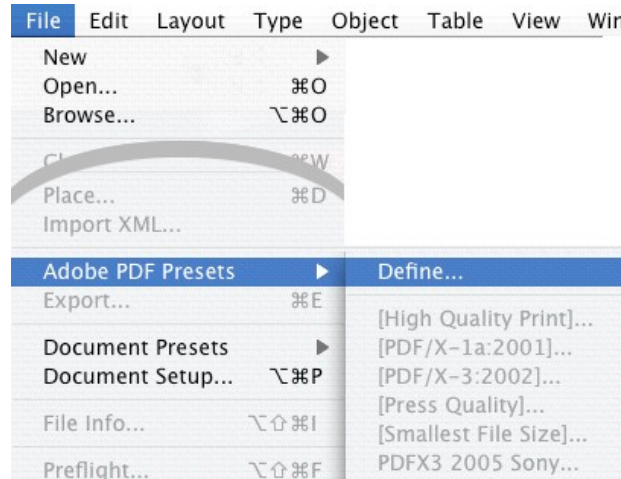


6.) Drag the Postscript file into the Acrobat Distiller window and receive a high resolution PDF

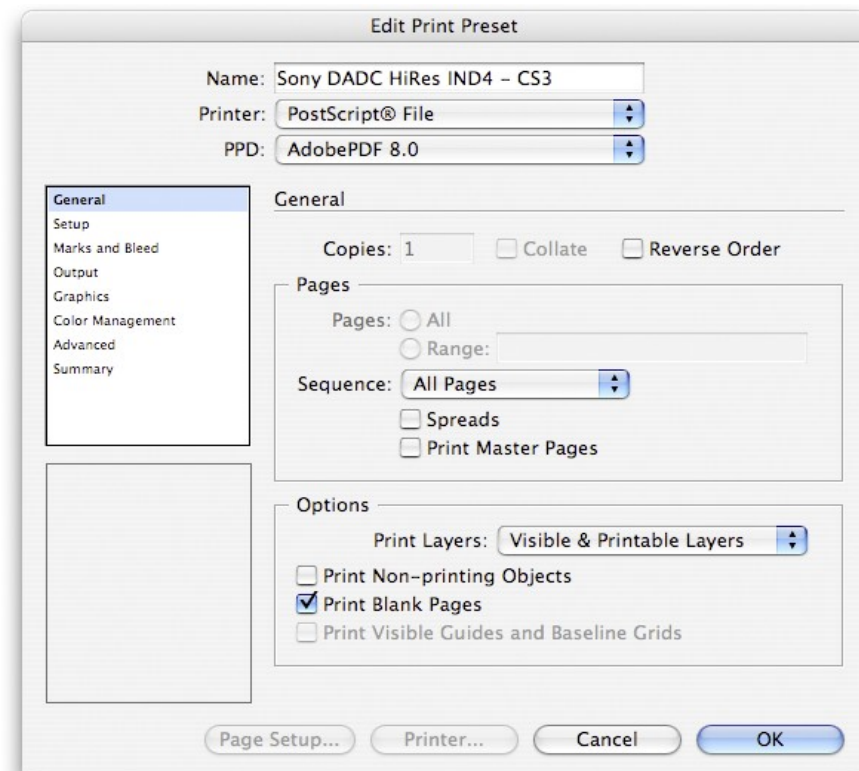
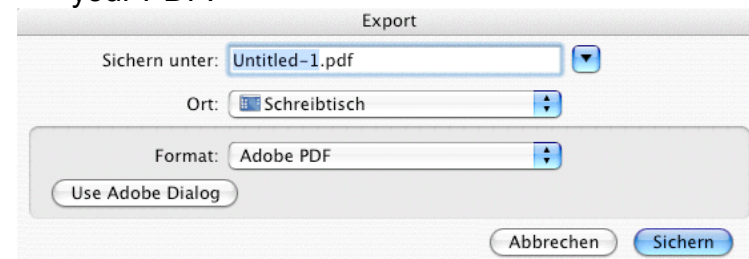


Creating a PDF via PDF Export:

- 1.) Load our presets for your version of InDesign from the folder "PDF via PDF Export" (choose from PC or Mac)



- 2.) Open your document, Press "Apple/ Strg. E", and choose the Sony DADC setting. Press the Button "Export" to save your PDF.



Specifications for FTP/WAM!NET transmission of final files:

- Perform an outgoing check of all your files prior to submission
 - all components present
 - dimensions, trim and registration marks, bleed
 - do they print OK?
 - all fonts embedded
 - high resolution pictures, logos - 600dpi
 - colour space CMYK

We strongly recommend to use a pre-flight check tool such as Pitstop from Enfocus or Acrobats internal preflight tool (use PDF X1a setting). A check profile for PitStop can be found under “Support Files\Pitstop”

- Put all data in a main folder and name it with the catalogue number, artist and title
e.g. >5125845000, PASCAL OBISPO, FAN<
- All final packaging artwork files must be supplied as a high resolution composite PDF.
- An information text file must be included with all relevant job details e.g. catalogue number, print details, contact address, specials, etc.

